

non
plus
ultra+

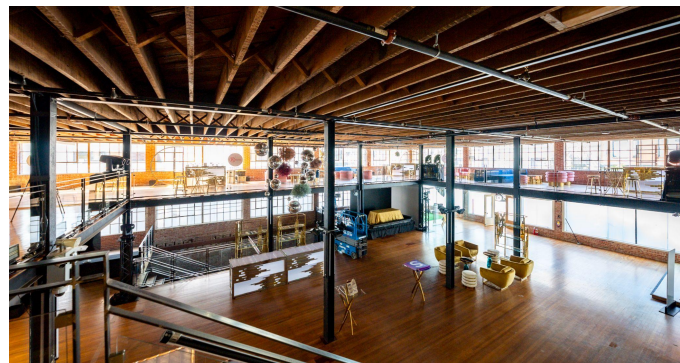
STOREK

+ THE PLUS FACTOR

You'll find us opposite the humdrum hotel ballroom or corporate convention center.

Our venues are architectural (and often historic) showpieces that over the years have acquired a distinct patina of revelry. Edges are worn and frayed from effervescent laughter, and floors are weathered from dancing shoes and splashes of champagne.

Events in our spaces hold magic on their own, and through Non Plus Ultra's dedication to total client happiness, we strive to make your experience with us as memorable as your celebration.



NON PLUS ULTRA WHAT WE DO



INCREDIBLE PROPERTIES

Iconic, often historic, venues that are as singular as the experiences they host



OBSESSIVE ATTENTION

Clients choose, we make it happen. We don't want to satisfy. We want to delight.



OPERATIONS SUPPORT

General operational support and full-service bars increases the overall guest experience.



PERMITTING & COMPLIANCE

Manage fire, building, health, traffic and other regulatory agency approvals.



PRODUCT LAUNCHES



CULTURAL FESTIVALS



BRAND ACTIVATIONS



IMMERSIVE ART



CONFERENCES



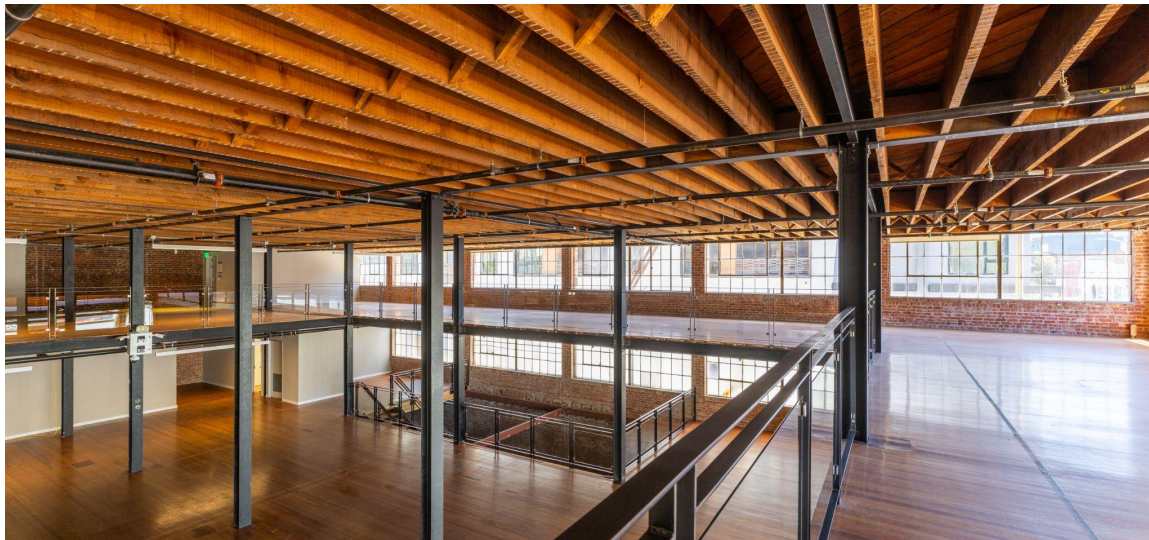
CONCERTS

STOREK

A space combining the essence of early 20th century architecture and modern event capabilities, Storek holds all of the elements to make your moment timeless.

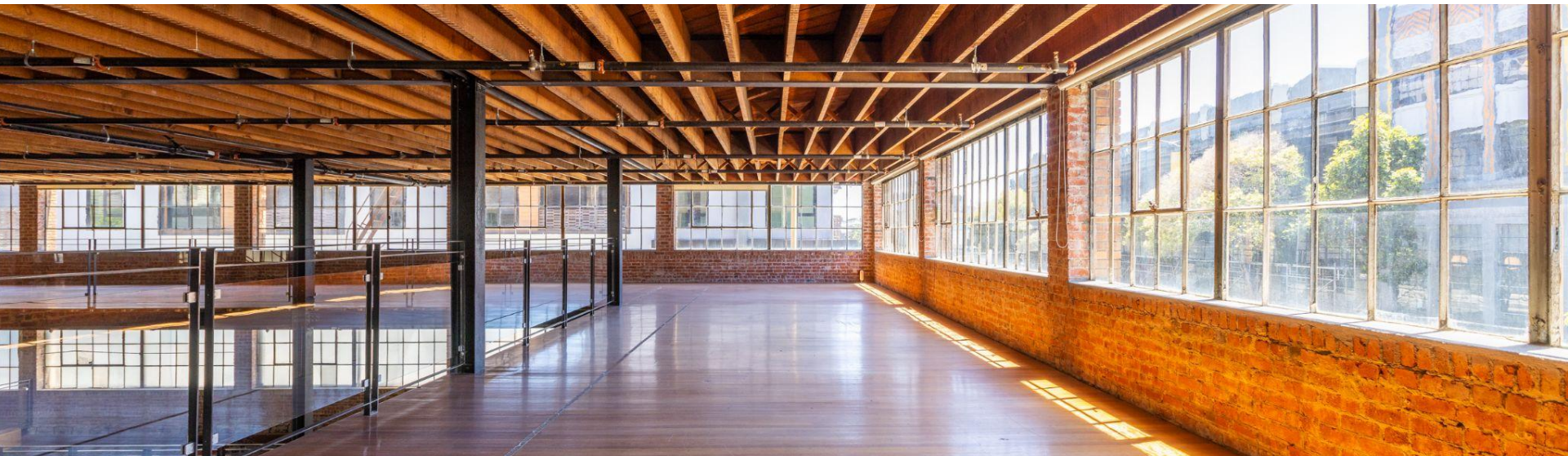
This beautifully restored brick-and-timber building was once home to a saddlery in the 1930's, which later expanded to supply leather and canvas goods throughout the Bay Area.

Come explore the endless possibilities, rich history and the allure of our newest venue in San Francisco.



DIMENSIONS

LOCATION	SQUARE FEET	CEILING HEIGHT
Total Venue	39,427	
Cellar	8,052	8.5'
1st floor	7,729	18.5'
Mezzanine	6,258	7.8'
3rd floor	8,315	10'
4th floor	8,344	11.3'



STOREK

DETAILS

ADDRESS

149 9th Street
San Francisco CA 94103

POWER

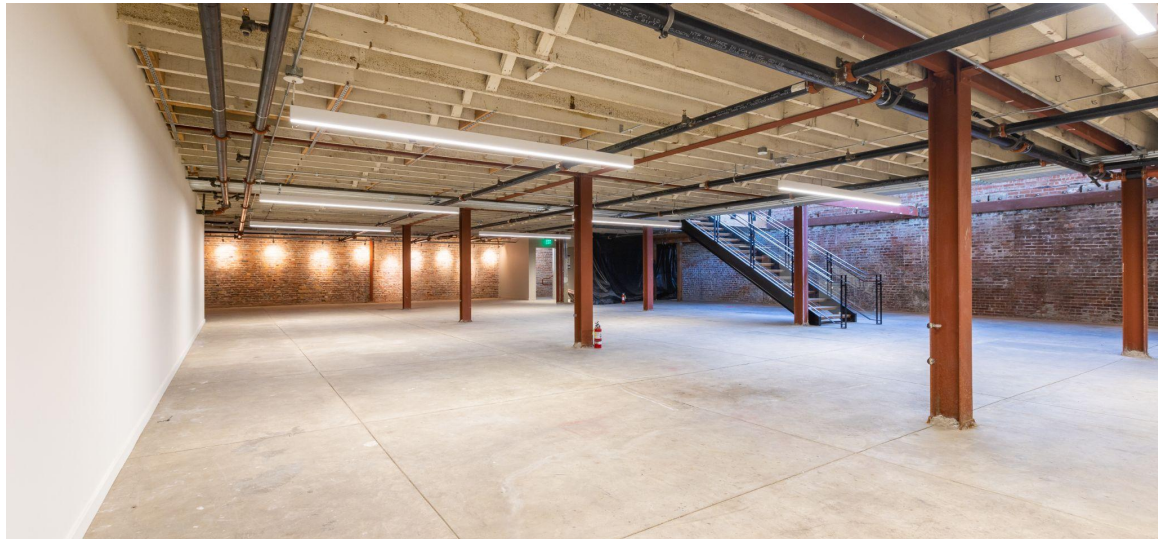
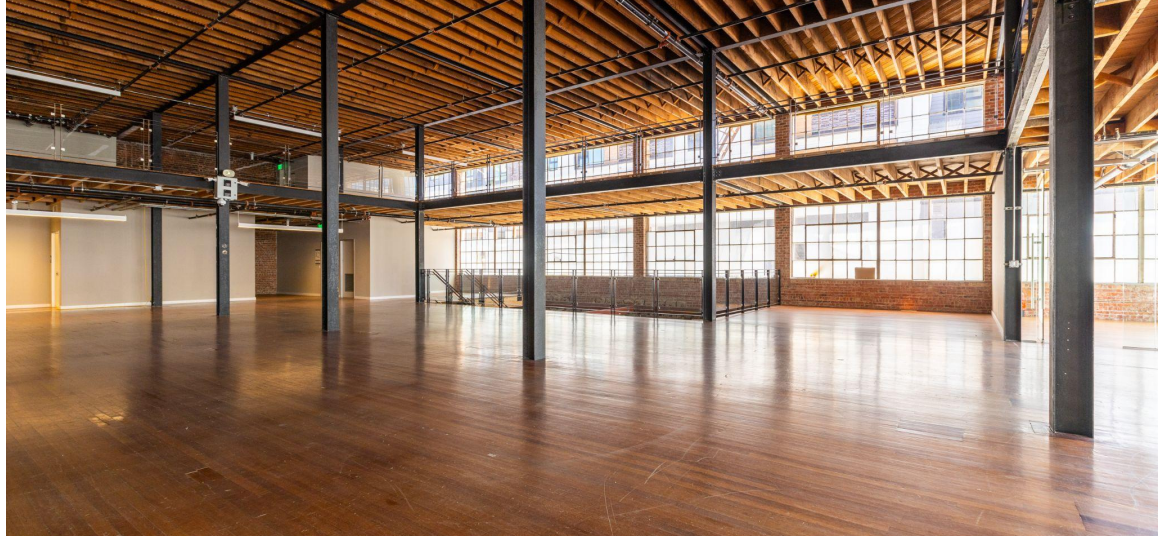
Dedicated 200 amps

WI-FI

300mbps up to 1Gbps

VENDORS

Ask for a list of our preferred vendors!



FLOOR PLAN

CELLAR

SQUARE FOOTAGE

STANDING

THEATER

8,052

475

240

9TH STREET

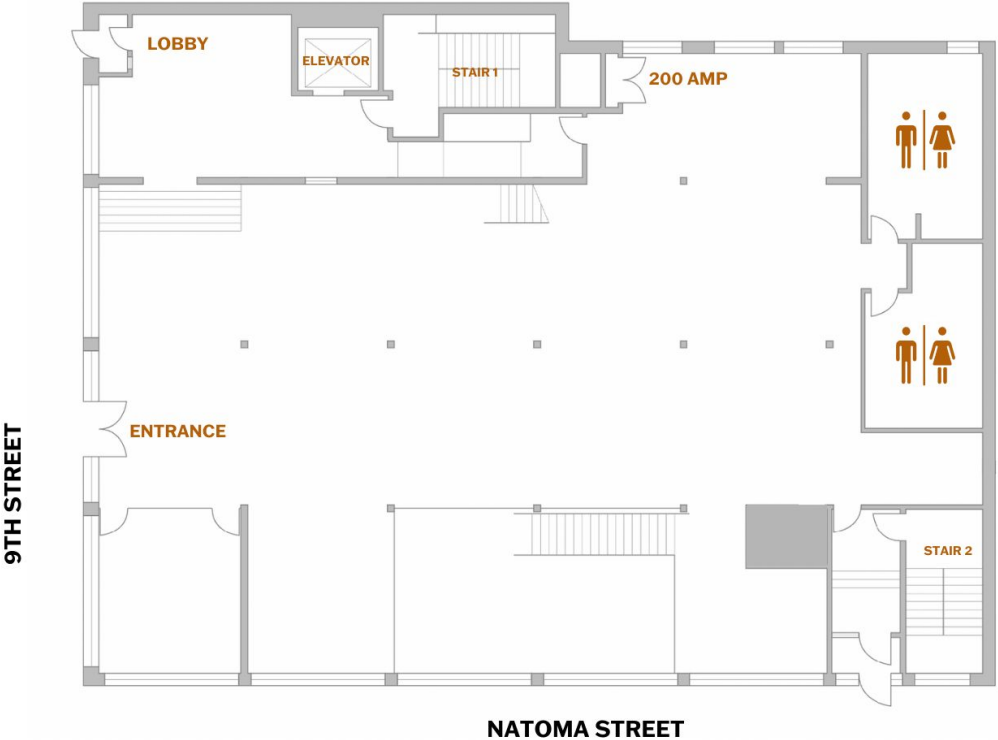


NATOMA STREET

FLOOR PLAN

FIRST FLOOR

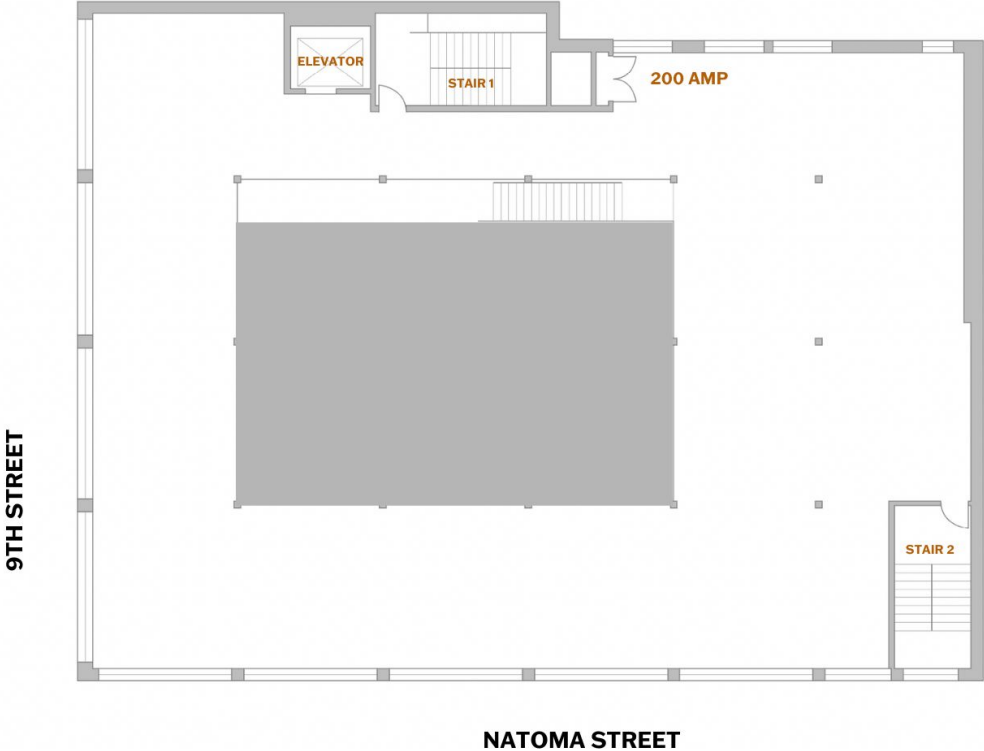
SQUARE FOOTAGE	STANDING	THEATER
7,729	560	285



FLOOR PLAN

MEZZANINE

SQUARE FOOTAGE	STANDING	THEATER
6,258	460	228



FLOOR PLAN

THIRD FLOOR

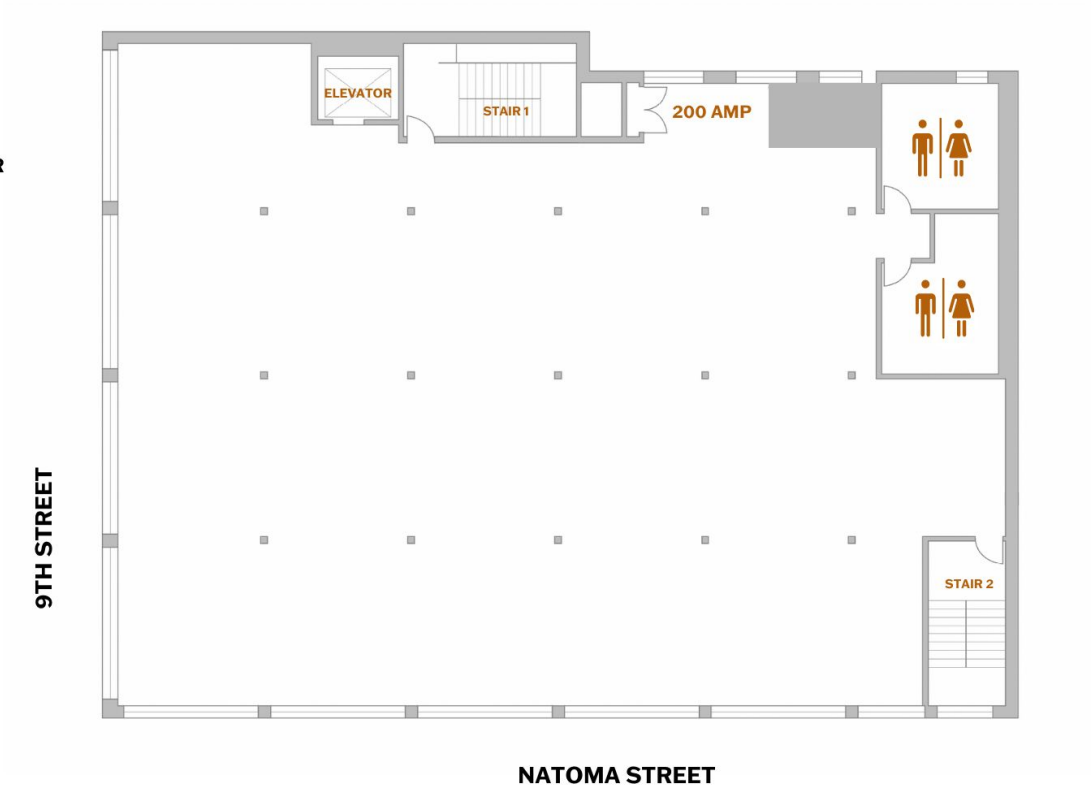
SQUARE FOOTAGE	STANDING	THEATER
8,315	625	448



FLOOR PLAN

FOURTH FLOOR

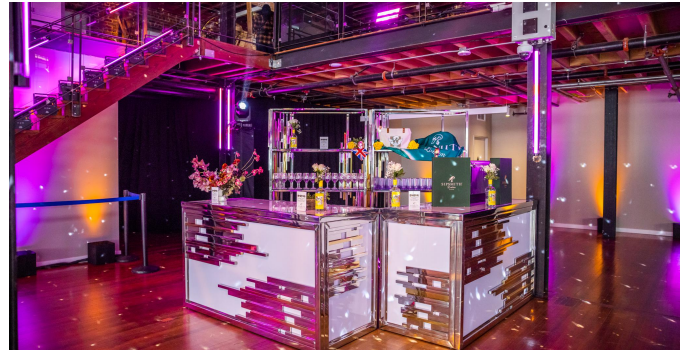
SQUARE FOOTAGE	STANDING	THEATER
8,344	625	448



BOOKINGS

415.608.2220
events@npuevents.com
npuevents.com

88 FIFTH STREET
SAN FRANCISCO, CA 94103



THANK YOU
Non Plus Ultra

npu.co